



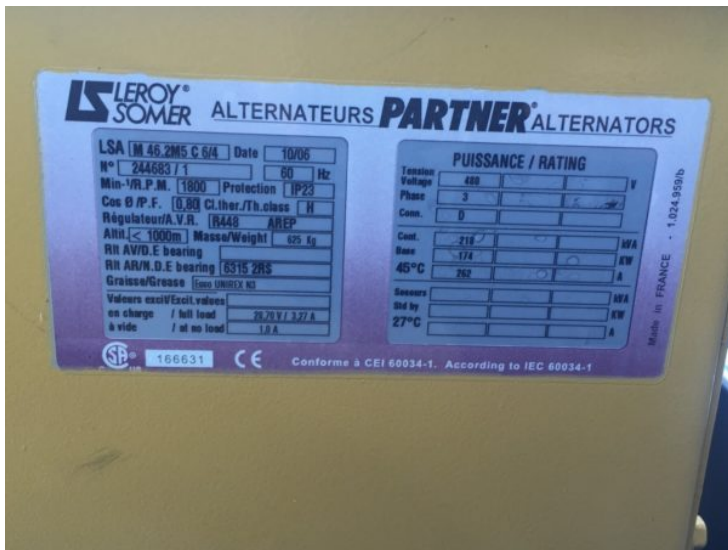
USD \$ 7,975 Départ USA

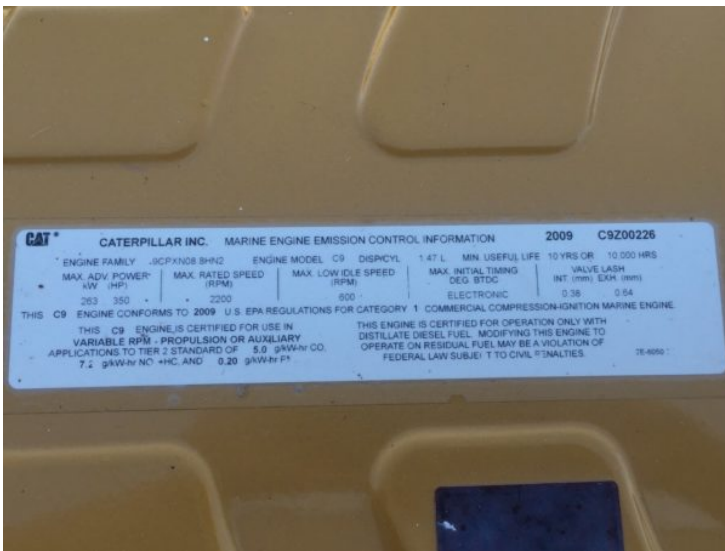
Modifiable pour 50 Hz

Fuel Diesel
Length 82"
Width 50"
Height 55"
Weight 4000 Lbs
Condition Running Takeout

Product Gallery







CATERPILLAR INC. MARINE ENGINE EMISSION CONTROL INFORMATION 2009 C9Z00226

ENGINE FAMILY J6CPXN08 BHN2	ENGINE MODEL C9	DISP CYL 1.47 L	MIN USEFUL LIFE 10 YRS OR 10,000 HRS
MAX ADV POWER 253 kW (350 HP)	MAX RATED SPEED 2200 RPM	MAX LOW SPEED 800 RPM	MAX INITIAL TIMING DEG BTDC
			VALVE LASH INT (mm) EXH (mm) 0.38 0.54

THIS C9 ENGINE CONFORMS TO 2009 U.S. EPA REGULATIONS FOR CATEGORY 1 COMMERCIAL COMPRESSION-IGNITION MARINE ENGINE. THIS ENGINE IS CERTIFIED FOR OPERATION ONLY WITH DISTILLATE DIESEL FUEL. MODIFYING THIS ENGINE TO OPERATE ON RESIDUAL FUEL MAY BE A VIOLATION OF FEDERAL LAW SUBJECT TO CIVIL PENALTIES.

THIS C9 ENGINE IS CERTIFIED FOR USE IN VARIABLE RPM PROPULSION OR AUXILIARY APPLICATIONS TO TIER 2 STANDARD OF 5.0 g/kWh CO, 7.2 g/kWh NO +HC, AND 0.20 g/kWh P.

7E-6059 2



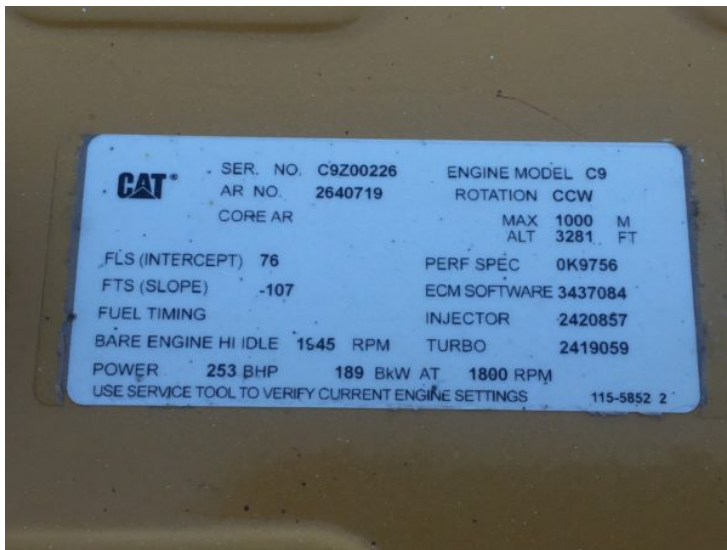
CATERPILLAR INC. CAT®

SER. NO. C9Z00226

IMO COMPLIANT ENGINE

THIS ENGINE CONFORMS TO THE IMO REGULATIONS FOR MARINE DIESEL ENGINES. THIS ENGINE COMPLIES WITH THE NITROGEN OXIDE EMISSION LIMITS OF REGULATION 13 OF ANNEX VI OF MARPOL 73/78.

178-0480



CATERPILLAR INC. CAT®

SER. NO. C9Z00226 ENGINE MODEL C9

AR NO. 2640719 ROTATION CCW

CORE AR MAX 1000 M ALT 3281 FT

FLS (INTERCEPT) 76 PERF SPEC 0K9756

FTS (SLOPE) -107 ECM SOFTWARE 3437084

FUEL TIMING INJECTOR 2420857

BARE ENGINE HI IDLE 1545 RPM TURBO 2419059

POWER 253 BHP 189 kW AT 1800 RPM

USE SERVICE TOOL TO VERIFY CURRENT ENGINE SETTINGS 115-5852 2



