

35 KVA Ingersoll Rand, Selectable, Sound Attenuated, 12 Lead, Trailer Mounted, 2011



Fuel Diesel

Year 2011

Voltage 240/120

Hours 6088 Hours

Phase 1/3 Phase

Make Ingersoll Rand

Model G40WMI-2A-T4I

Serial 431678UIVD62

Hertz 60 Hz

Wires 12 Lead

Kilo Watts 35 KVA 28 kW

Mounted Trailer Mounted

Switch Selectable

Enclosure Sound Attenuated Enclosure

Enclosed Weather Proof Enclosure

Lead Reconnectable

Length 144

Width 66

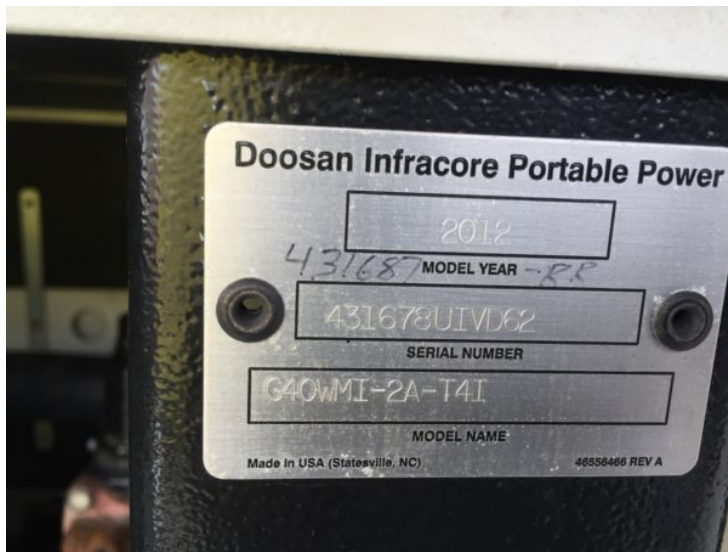
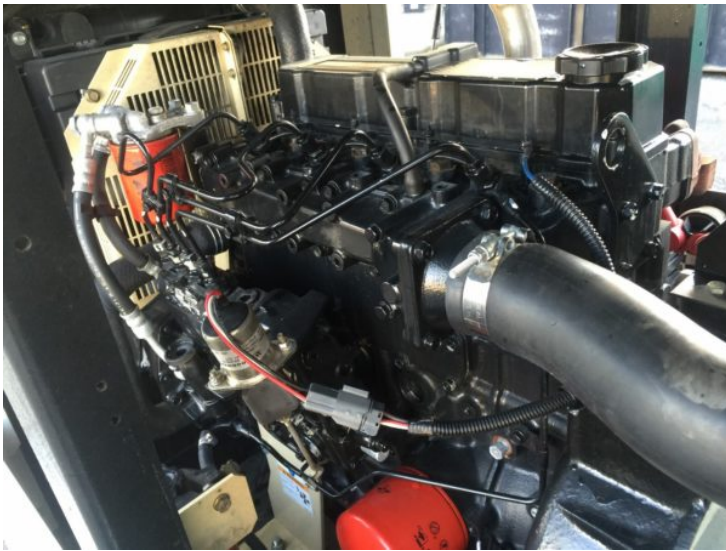
Height 70

Weight 3520 GVWR

Condition Well Maint. Unit, Tested, Serviced, Ready to go!

Circuit Breaker Yes

Product Gallery









DOOSAN Doosan International USA, Inc.

	PH	LINE KVA	PRIME KW	FLA	
G40	48C	35	28	42	
	JP	35	28	98	
	240 V 30/1P	21	21	89	
PF	0.8	HZ	60	RPM	1800
RATED AMBIENT	40C		INSULATION CLASS		H
UNBALANCE LOAD %	25				


INTERTEK
 ELECTRICAL ASSEMBLY
 RELATED TO MOBILE
 ENGINE GENERATORS
 CERTIFIED TO
 CAN/CSA
 C22.2 NO. 14
 14023P01



